



The Catkins, Poplar Avenue, Peterborough, PE1

Guide Price £155,000



The Catkins, Poplar Avenue

Peterborough, PE1

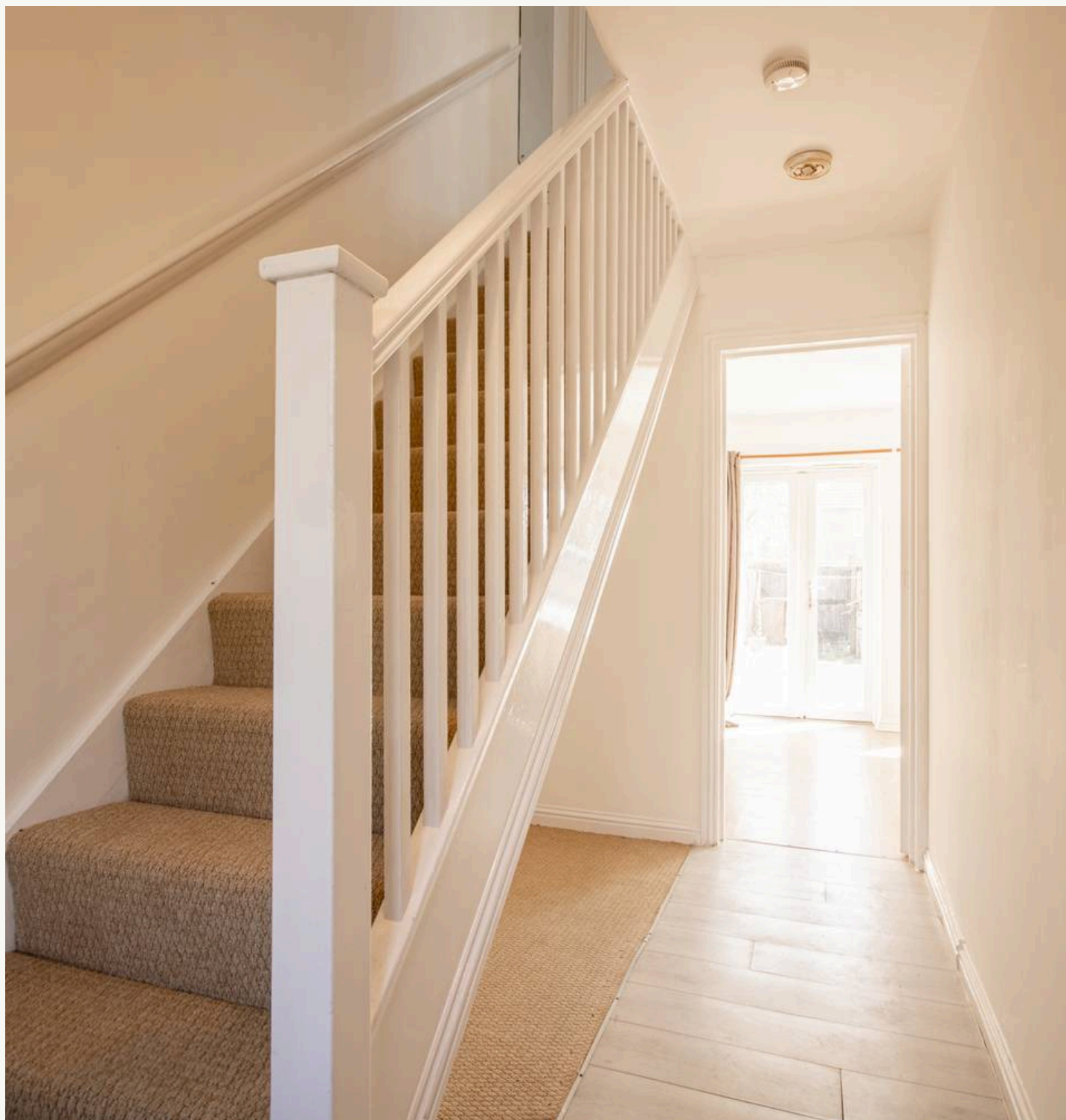
Situated in a convenient and well-established residential location, this two-bedroom terraced home presents an excellent opportunity for first-time buyers, investors, or those looking to downsize, and is offered for sale with no upward chain.

The property briefly comprises an entrance hallway leading through to a lounge, featuring French doors that open directly onto the rear garden, creating a bright and inviting living space. The ground floor also benefits from a re-fitted kitchen and a downstairs shower room.

To the first floor, there are two well-proportioned double bedrooms, along with a family bathroom, offering practical and flexible accommodation throughout.

Externally, the property boasts a fully enclosed rear garden, ideal for outdoor entertaining or low-maintenance living, along with the added benefit of an off-road parking space to the rear.

The Catkins is ideally positioned within close proximity to local amenities, schools, and transport links. The property offers easy access to Peterborough City Centre, the train station with direct links to London, and major road networks including the A47 and A1, making it a great choice for commuters and families alike.

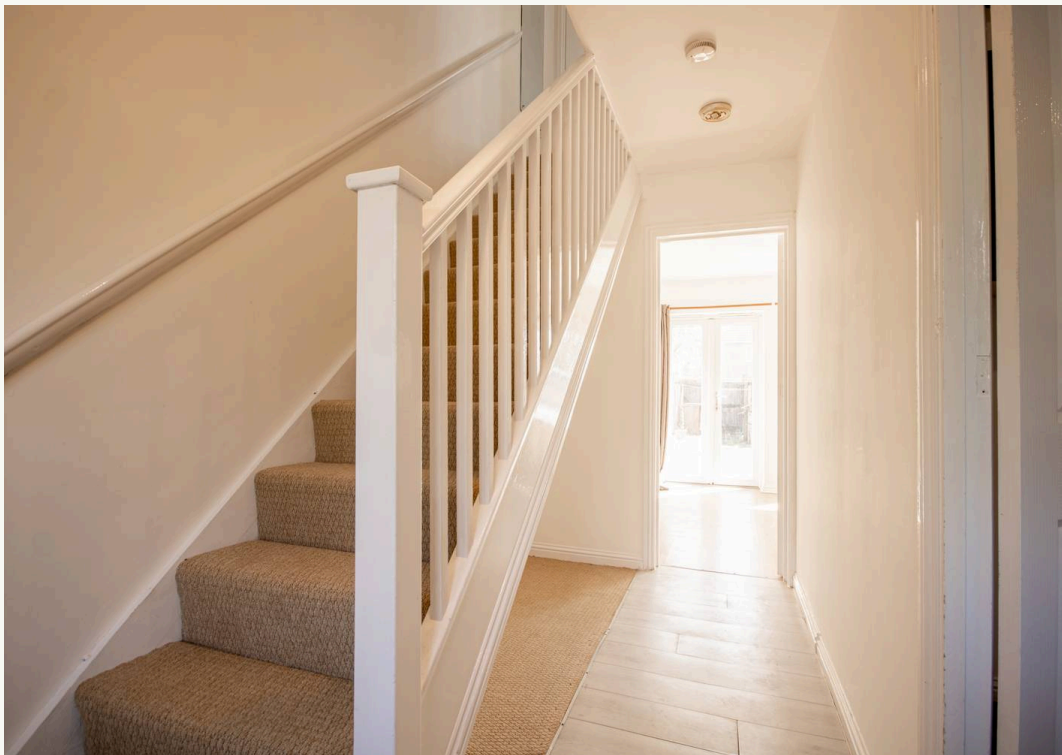


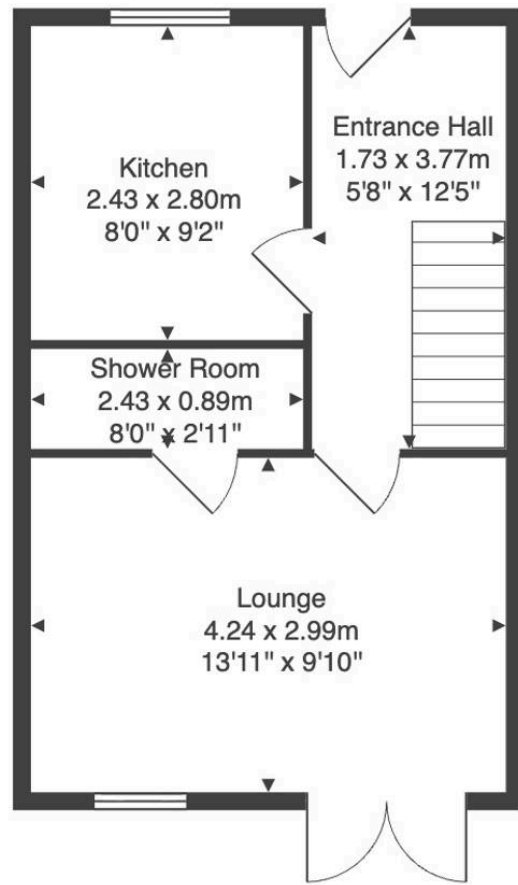




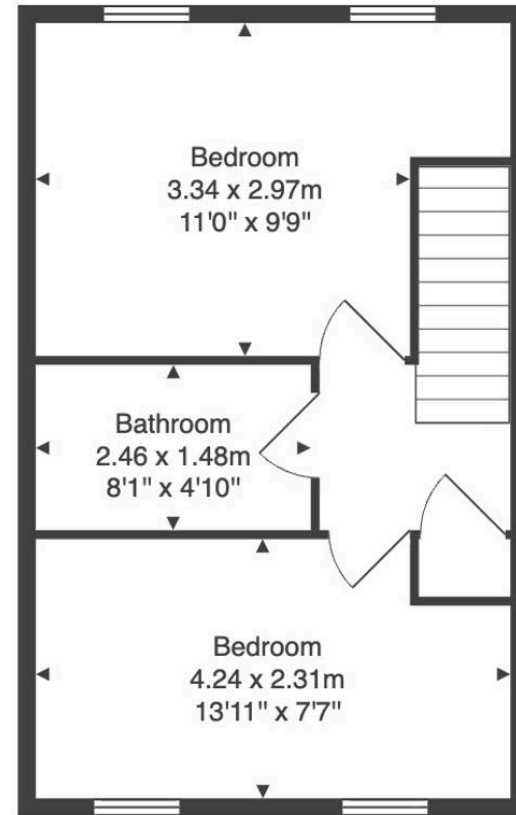








Ground Floor



First Floor

Total Area: 58.4 m² ... 628 ft²

All measurements are approximate and for display purposes only.



Hortons

Unit 11, Brook Park Gaddesby Lane - LE7 4ZB

07939487526 · mainul@hortons.co · hortons.co