



Woodhead Close, Stamford, PE9
£475,000

 HORTONS

Woodhead Close

Stamford, PE9

Situated within a quiet cul-de-sac in the highly sought-after market town of Stamford, this well-presented four-bedroom detached family home offers spacious and versatile accommodation extending to approximately 1,358 sq. ft.

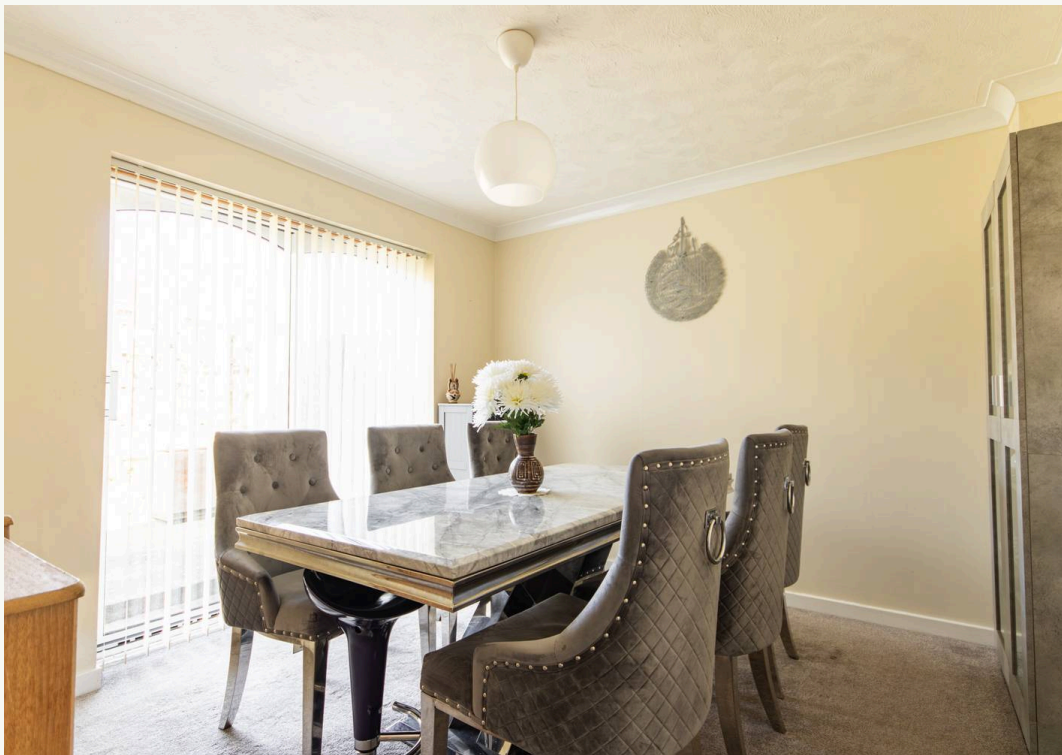
The property has been thoughtfully updated by the current owners, with a newly fitted kitchen, utility room, ground floor WC, and stylish tiled flooring all completed within the last year, creating a modern and move-in-ready home.

The accommodation briefly comprises a welcoming entrance hallway with newly fitted tiled flooring, a generous 17ft lounge featuring a bay window allowing for plenty of natural light, a separate dining room with sliding doors opening onto the rear garden, a contemporary re-fitted kitchen, a re-fitted utility room, an additional family room offering flexible living space, and a modern ground floor WC.

To the first floor, the master bedroom benefits from fitted wardrobes and a re-fitted en-suite shower room. There are three further well-proportioned bedrooms, all with fitted wardrobes, alongside a family bathroom.

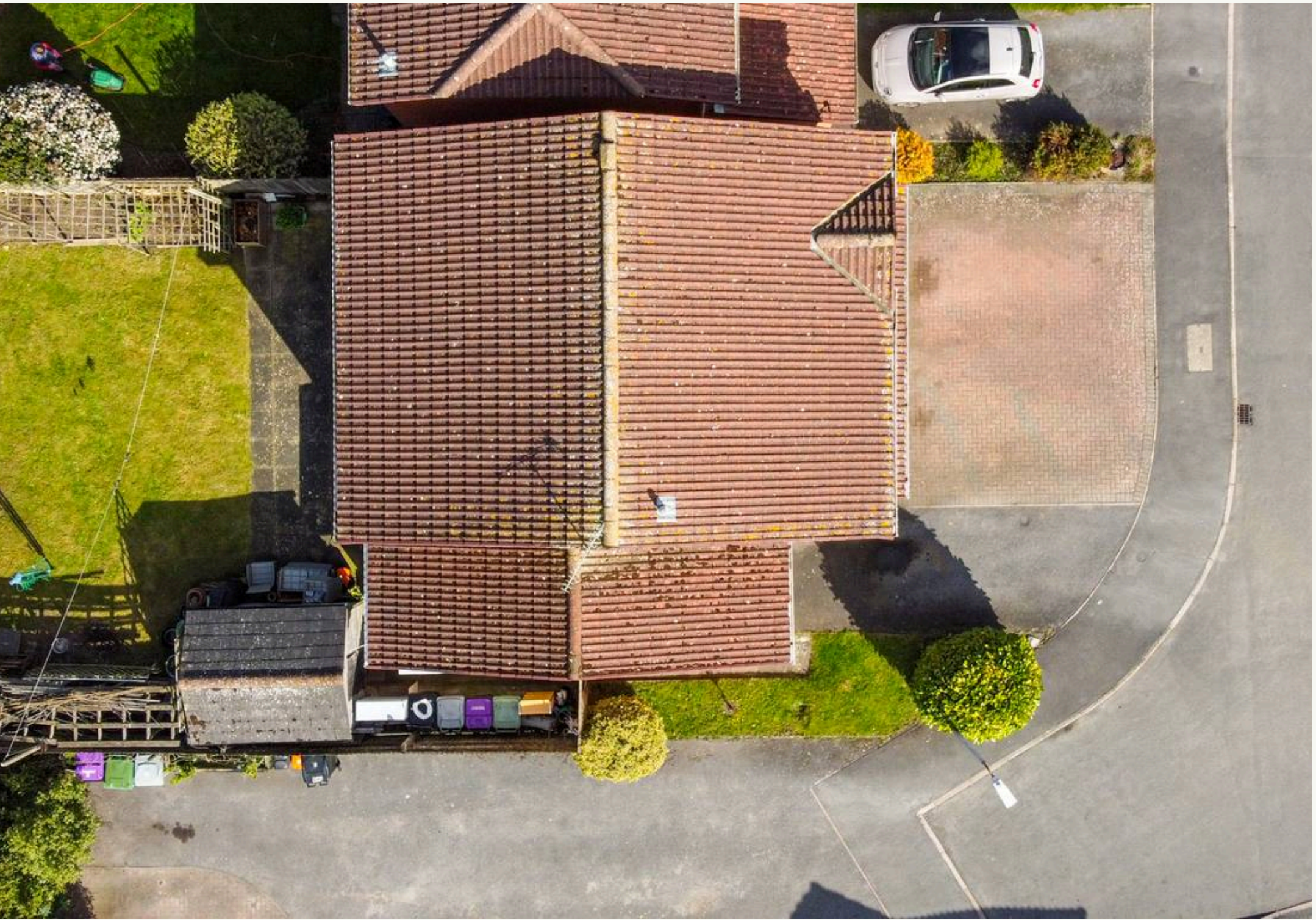
Externally, the property enjoys a fully enclosed rear garden, mainly laid to lawn with a patio seating area—ideal for outdoor entertaining—as well as convenient side access. To the front, a block-paved driveway provides off-road parking for up to three vehicles.



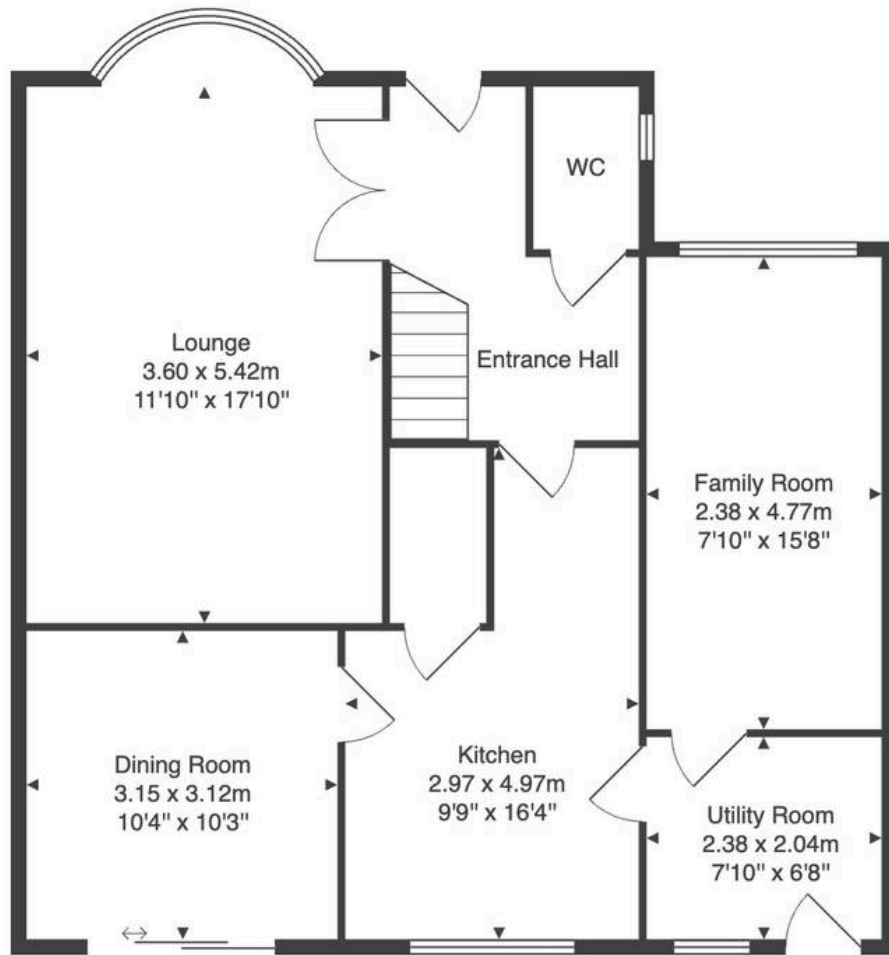




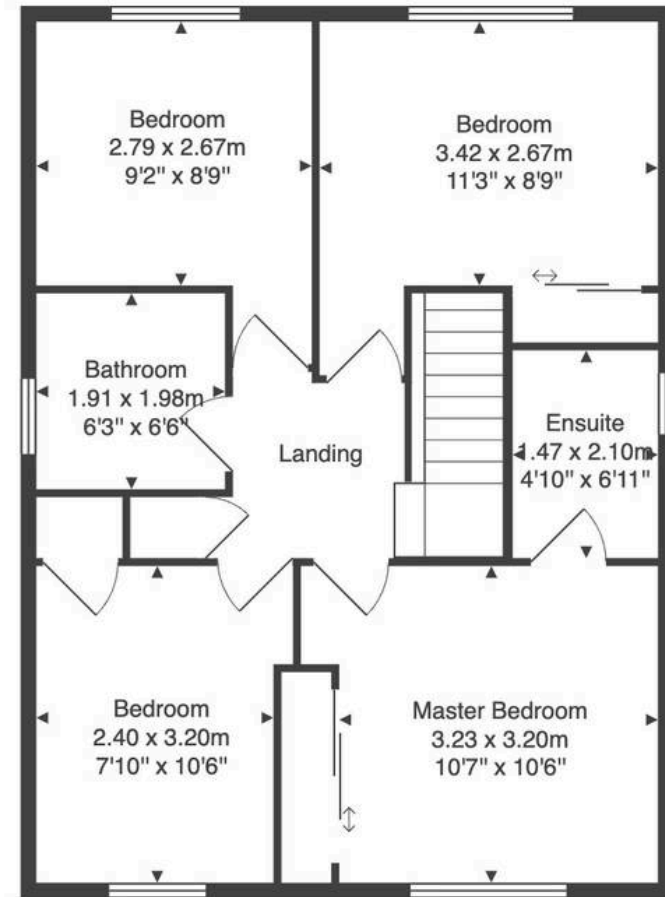








Ground Floor



First Floor

Total Area: 126.1 m² ... 1358 ft²

All measurements are approximate and for display purposes only.



Hortons

Unit 11, Brook Park Gaddesby Lane - LE7 4ZB

07939487526 · mainul@hortons.co · hortons.co