



## Drolma Mahayana Buddhist Centre, Dogsthorpe Road

In Excess of **£550,000**



# Drolma Mahayana Buddhist Centre

Dogsthorpe Road, Peterborough, PE1

A substantial and characterful six-bedroom family home, set across three floors and offering an impressive 2,952 sq. ft. of versatile living accommodation.

This striking property immediately impresses with a grand entrance hallway, showcasing original floorboards and setting the tone for the space and charm found throughout. The 21ft lounge features a large bay window to the front, flooding the room with natural light, alongside original doors that enhance the home's period appeal. A separate dining room, also with a bay window overlooking the front garden, provides an ideal setting for entertaining and flows seamlessly into the kitchen diner.

The kitchen diner is a real focal point of the home, complete with a feature fireplace and access to a utility room, pantry, and a convenient downstairs WC, offering both practicality and character.

To the first floor, there are three well-proportioned double bedrooms, two of which benefit from en-suite facilities, alongside a modern family bathroom. The second floor continues to impress with a further three double bedrooms, an additional bathroom, and a study, providing flexible space ideal for growing families or those working from home.

Externally, the property enjoys a generous wrap-around front garden, mainly laid to lawn.

- SIX BEDROOMS
- THREE STOREY
- TWO RECEPTIONS
- FOUR BATHROOMS

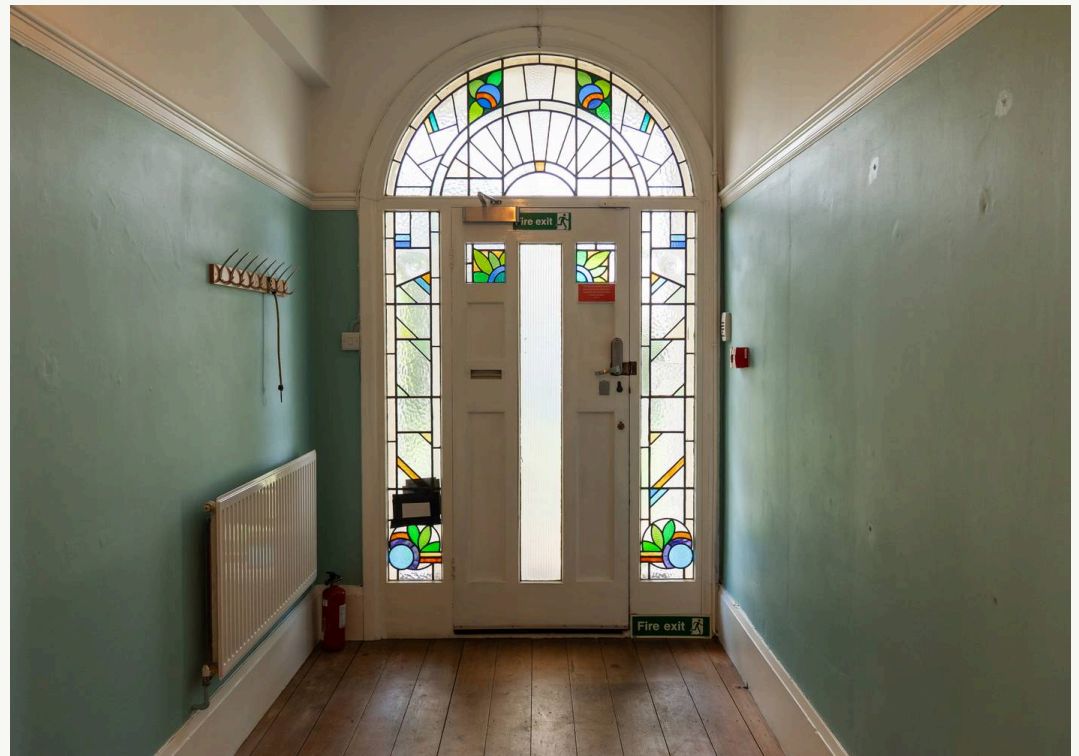


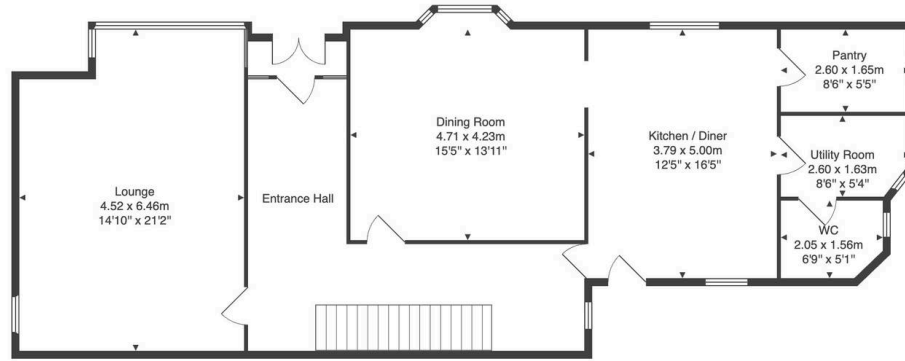




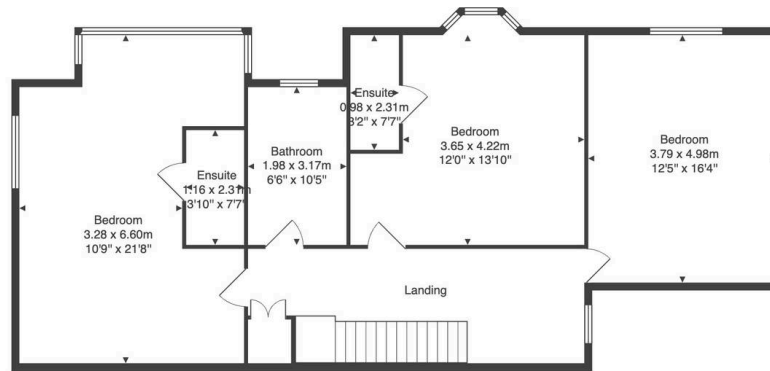








Ground Floor



First Floor



Second Floor

Total Area: 274.2 m<sup>2</sup> ... 2952 ft<sup>2</sup>  
 All measurements are approximate and for display purposes only.



# Hortons

Unit 11, Brook Park Gaddesby Lane - LE7 4ZB

07939487526 · mainul@hortons.co · hortons.co