



Chatsworth Place, Peterborough, PE3

In Excess of **£475,000**



Chatsworth Place

Peterborough, PE3

Situated within the highly sought-after residential location of Longthorpe, this impressive and substantially extended four-bedroom detached home offers generous and versatile living space, perfectly suited to modern family life.

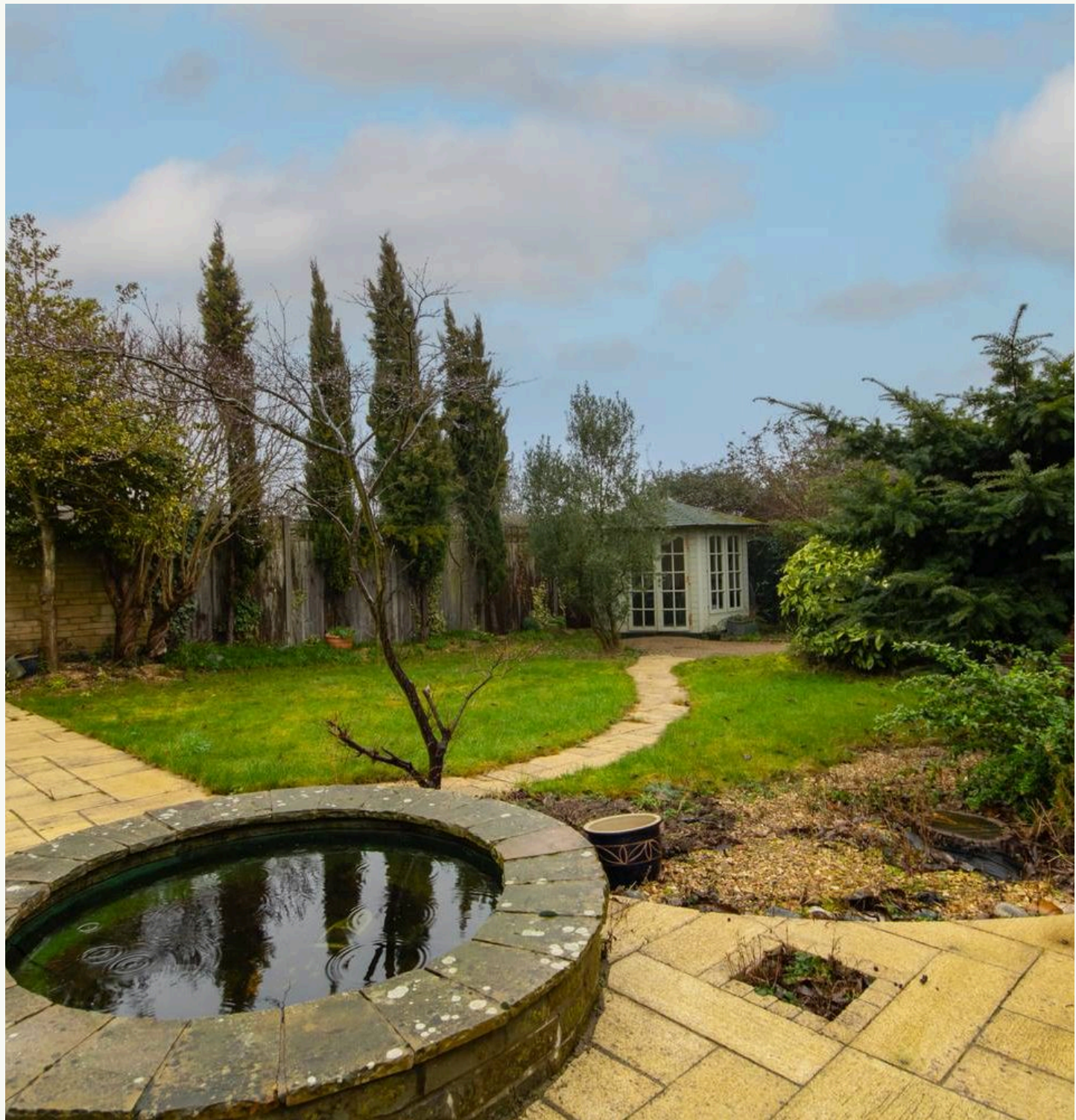
The property welcomes you via a spacious entrance hallway, leading through to a superb 26ft lounge providing an excellent main reception space. A separate family room enjoys sliding doors opening directly onto the rear garden, creating an ideal indoor-outdoor living environment. The heart of the home is the beautifully re-fitted kitchen diner, thoughtfully designed for both everyday living and entertaining, also benefiting from sliding doors giving direct garden access.

The ground floor further benefits from a contemporary shower room, a dedicated sauna room offering a unique touch of luxury, and a practical utility room providing additional storage and laundry space.

Upstairs, the property offers four well-proportioned bedrooms and a modern family bathroom, making this an ideal home for growing families or those needing flexible working space.

Externally, the home continues to impress with a substantial block-paved driveway providing parking for multiple vehicles and access to the garage and EV charging point. The fully enclosed rear garden is mainly laid to lawn and features a patio seating area along with a summer house.

- FOUR BEDROOMS
- DETACHED
- EXTENDED

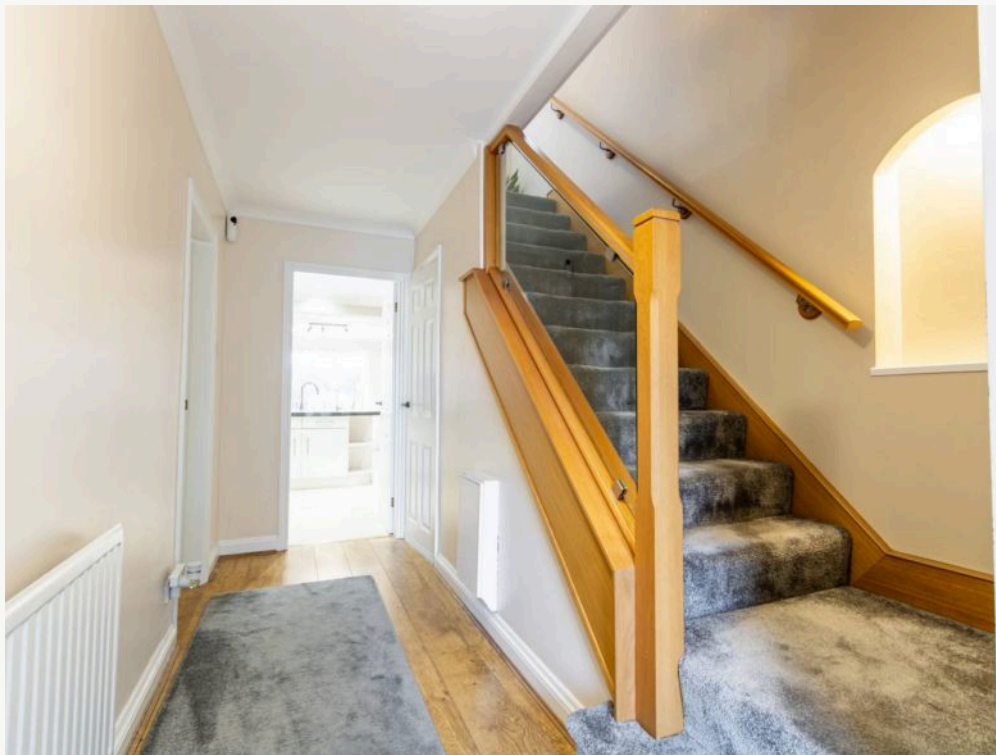




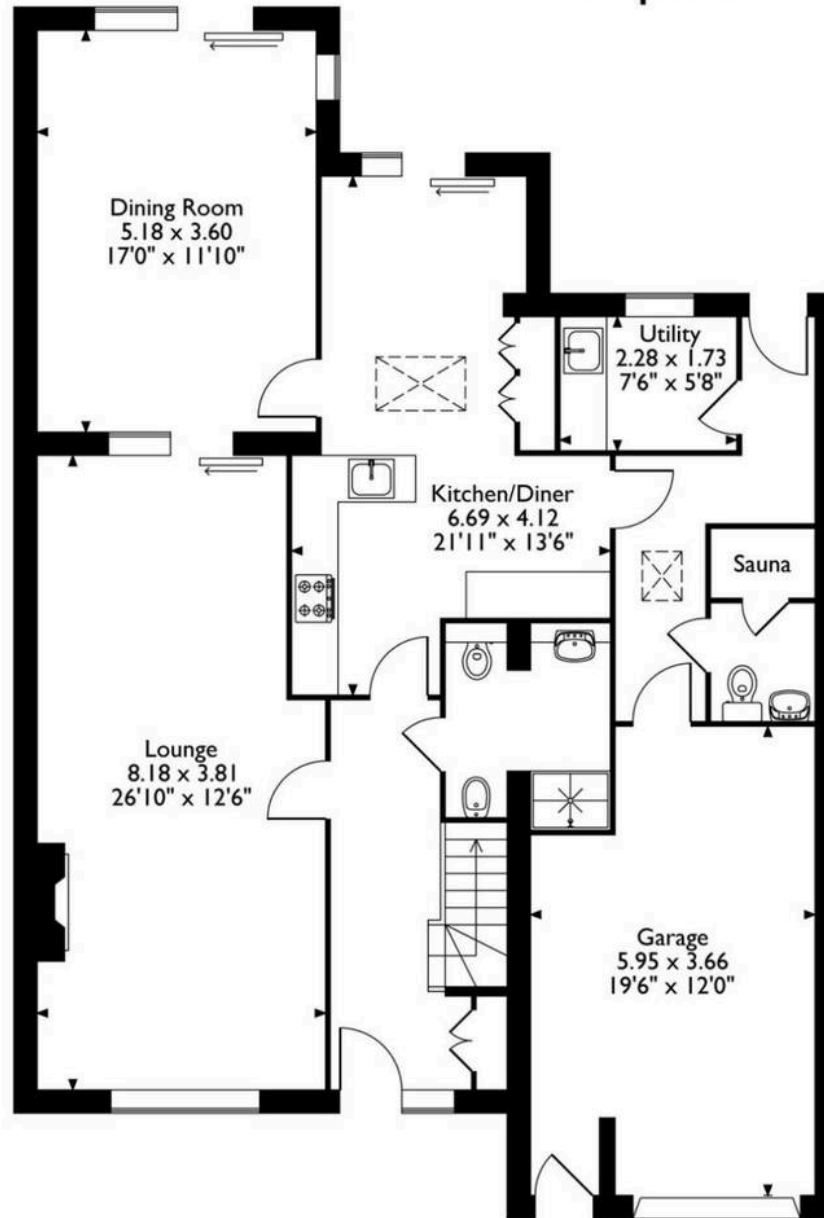




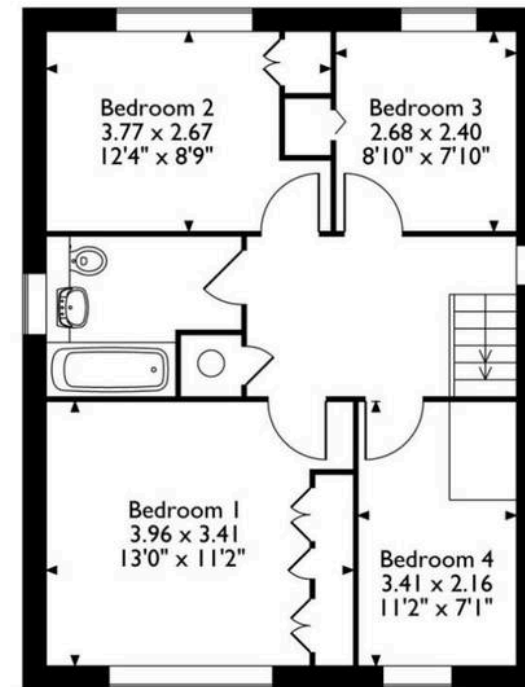




Chatsworth Place, Peterborough
Approximate Gross Internal Area
173 Sq M/1862 Sq Ft



Ground Floor



First Floor

Please note that the location of doors, windows and other items are approximate and this floorplan is to be used for illustrative purposes only. Unauthorized reproduction is prohibited.



Hortons

Unit 11, Brook Park Gaddesby Lane - LE7 4ZB

07939487526 · mainul@hortons.co · hortons.co