



Dogsthorpe Road, Peterborough, PE1

In Excess of £500,000

 HORTONS

282 Dogsthorpe Road

Peterborough, Peterborough

Hortons are delighted to present Dogsthorpe Road — an impressive, heavily extended five-bedroom detached family home offering exceptional space, versatile living and a superb layout designed for modern family life.

Set behind a generous driveway providing ample off-road parking, the home opens into a bright entrance hallway with a useful storage cupboard. The ground floor boasts a remarkable 28ft extended lounge, complete with French doors that open seamlessly onto the rear garden. A separate family room and dedicated dining room offer multiple reception spaces, perfect for entertaining or flexible day-to-day living. The re-fitted kitchen diner provides an ideal hub for the household, complemented by a convenient downstairs bathroom.

To the first floor, the property features a spacious master bedroom with ensuite, along with four further bedrooms — one of which enjoys private access to a balcony. A modern family bathroom completes the upstairs accommodation.

Outside, the property continues to impress with a fully enclosed rear garden, offering a safe and enjoyable space for children, pets, and outdoor gatherings. There is also access to a garage with a separate rear storage room, providing excellent additional utility.



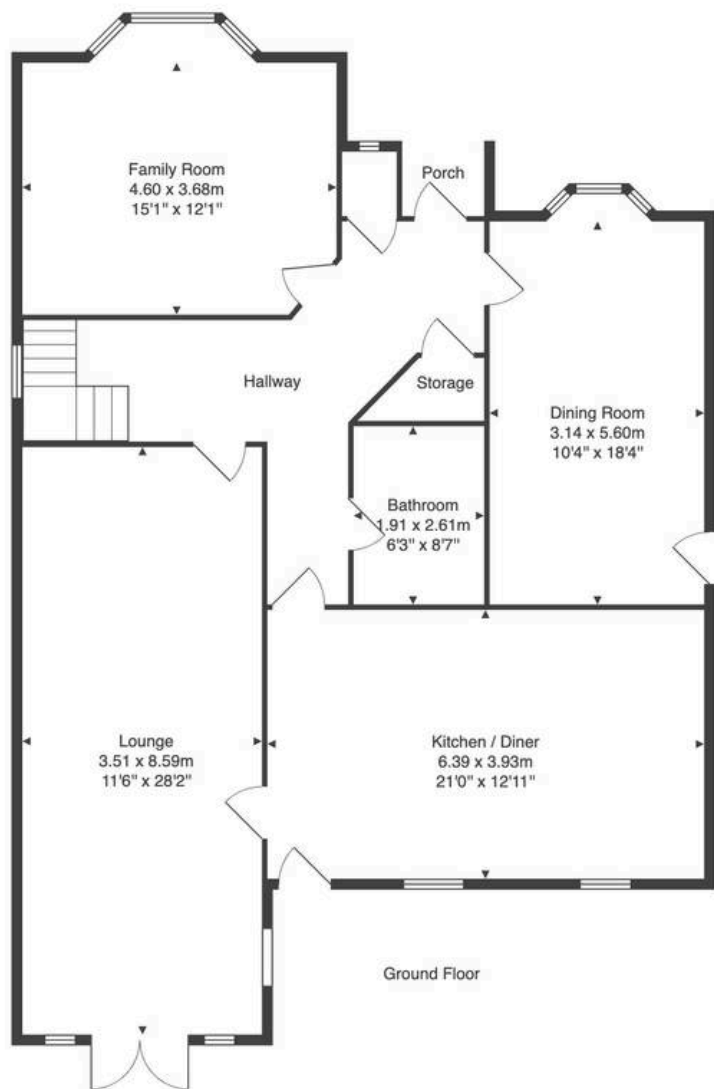




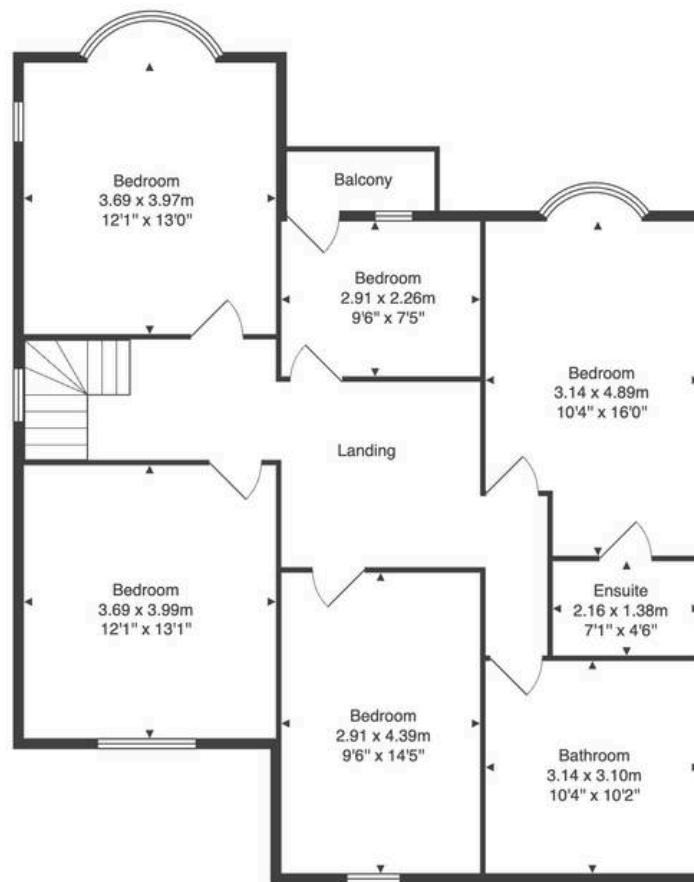




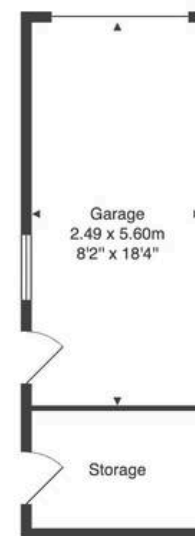




Ground Floor



First Floor



Outbuilding

Total Area: 233.3 m² ... 2512 ft² (excluding balcony)
 All measurements are approximate and for display purposes only.



Hortons

Unit 11, Brook Park Gaddesby Lane - LE7 4ZB

07939487526 · mainul@hortons.co · hortons.co