



11 Red Lion Street, Kings Sutton

Guide Price £750,000

 HORTONS



11 Red Lion Street, Kings Sutton

Guide Price £750,000

 HORTONS

11 Red Lion Street

Kings Sutton, Banbury

Cobblers is a beautifully presented and refurbished period cottage, finished to an exceptionally high standard. Thoughtfully renovated throughout, this turnkey home blends character and charm with modern comfort, stylish interiors and generous living accommodation over two floors. Every detail of the house, from the restored elm floors to the bespoke fitted wardrobes and contemporary kitchen, has been considered to create a home of quality and style.

All main receptions rooms can be accessed off of a light and welcoming entrance hall. The sitting room is generous and full of character, with wide-plank oak flooring, deep skirting boards and a wood burner creating a warm and elegant focal point.

At the heart of the house lies the stunning kitchen, breakfast and dining area, beautifully refitted with a flagstone floor, offering a seamless space for everyday living and entertaining. Practicality is well catered for too, with a well-planned utility room, guest cloakroom/WC and a separate study with a bespoke fitted desk, cupboards and wine rack.

Upstairs, the principal bedroom is beautifully finished and features its own well designed en suite. A further bedroom offers excellent accommodation and another is fitted with bespoke, wall-to-wall wardrobes. The family bathroom has been thoughtfully redesigned, with a raised ceiling and stylish contemporary fittings creating a bright and elegant space. Every detail has been considered, from bespoke joinery to high-quality finishes, ensuring comfort and practicality throughout.

Tucked away in the heart of the picturesque village









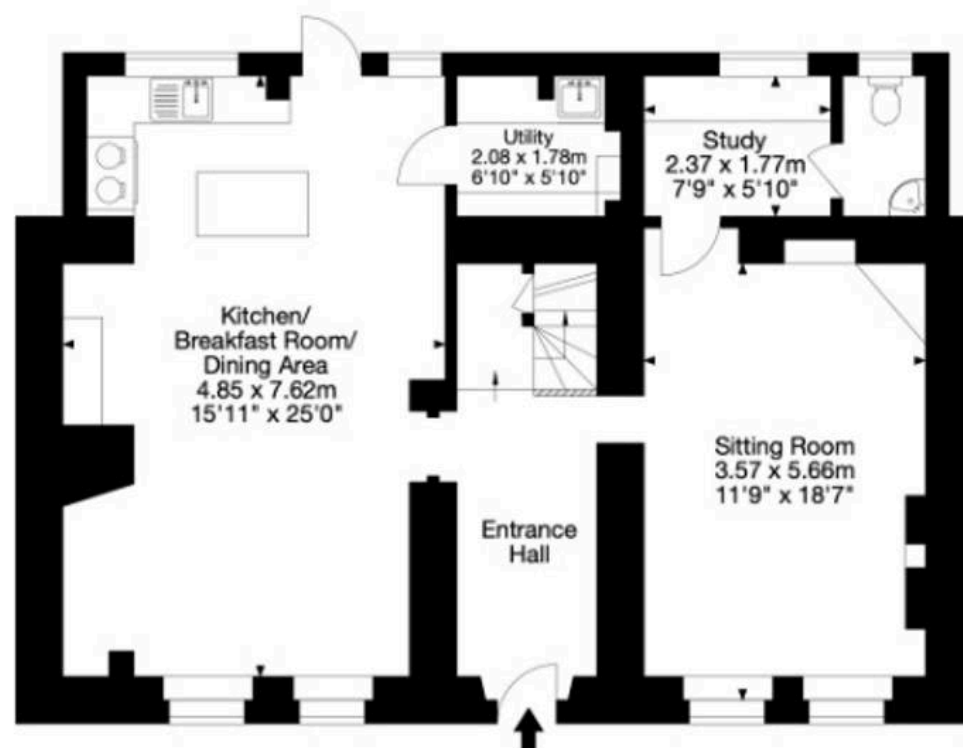
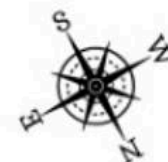
Red Lion Street, Kings Sutton, Banbury OX17 3RH

Gross Internal Area (Approx.)

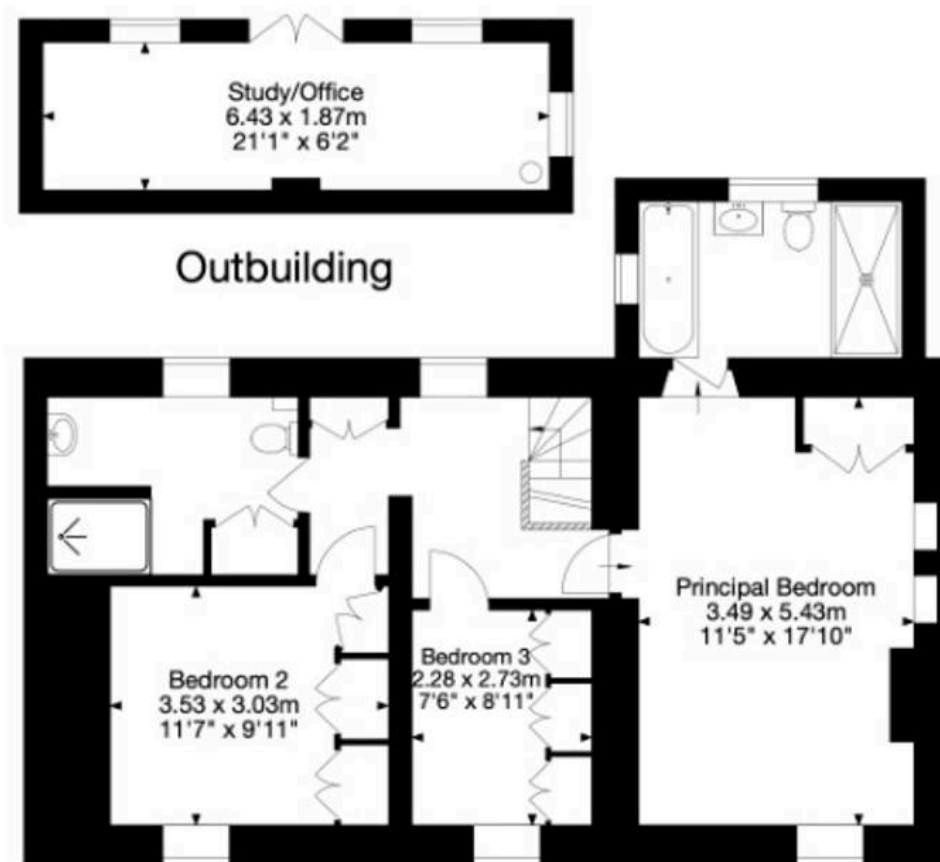
Main House = 149 sq m / 1,607 sq ft

Outbuilding = 12 sq m / 129 sq ft

Total Area = 161 sq m / 1,736 sq ft



Ground Floor



First Floor

Capture Property Marketing 2024. Drawn to RICS guidelines. Not drawn to scale.
Plan is for illustration purposes only. All features, door openings, and window locations are approximate.
All measurements and areas are approximate and should not be relied on as a statement of fact.

Capture.



Emily Williams - Hortons

Unit 11, Brook Park Gaddesby Lane - LE7 4ZB

03300430131 • ew@hortons.co • hortons.co/