



1 Davis Close Clark Road, Crawley

Offers Over £325,000

 HORTONS

1 Davis Close Clark Road

Crawley, Crawley

Tucked away in a quiet cul-de-sac and just moments from **Buchan Park**, this beautifully updated three-bedroom end of terrace home offers a rare combination of space, privacy, and modern living.

Occupying a desirable end position, the property benefits from a **larger-than-average, fully enclosed wraparound garden** — extending from the side around to the front. This creates a unique outdoor space rarely found in similar homes, ideal for entertaining, families, or simply enjoying a greater sense of privacy.

Internally, the home has been thoughtfully improved throughout. The entrance hallway immediately sets the tone, featuring cleverly concealed under-stair storage hidden behind a full-length mirrored sliding door — both practical and visually clean. The property also benefits from a **YALE keyless entry system**, offering secure and convenient access via code or fob.

To the rear, the **refitted kitchen and dining area** forms the heart of the home. Designed with modern living in mind, it includes a built-in breakfast bar and opens directly onto the garden through double doors, allowing for natural light and an easy indoor-outdoor flow. There is additional flexibility within this space, currently used as a secondary seating or dining area depending on lifestyle.

Positioned separately, the main living room provides a dedicated space to relax or entertain — offering a more private, traditional lounge setting.

Upstairs, the property continues to impress with **new carpets throughout**. There are two well-







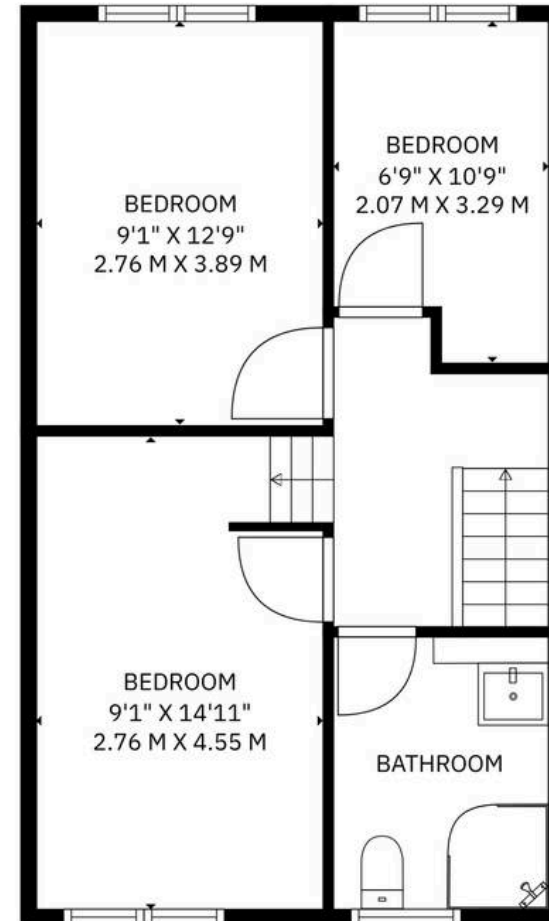
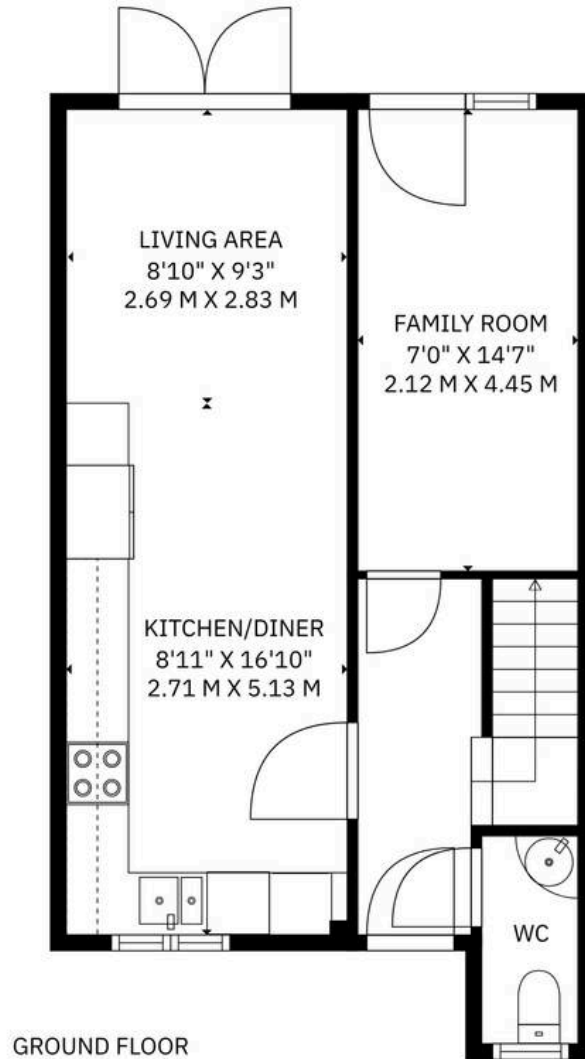






1 Davis drive

Total Internal Area: 82 sq.m (888 sq.ft)





Keira Joyce - Hortons

Unit 11, Brook Park Gaddesby Lane - LE7 4ZB

+44 7738 238769 · keira@hortons.co · hortons.co/