



9 Windsor Court, West Hallam

Guide Price £210,000

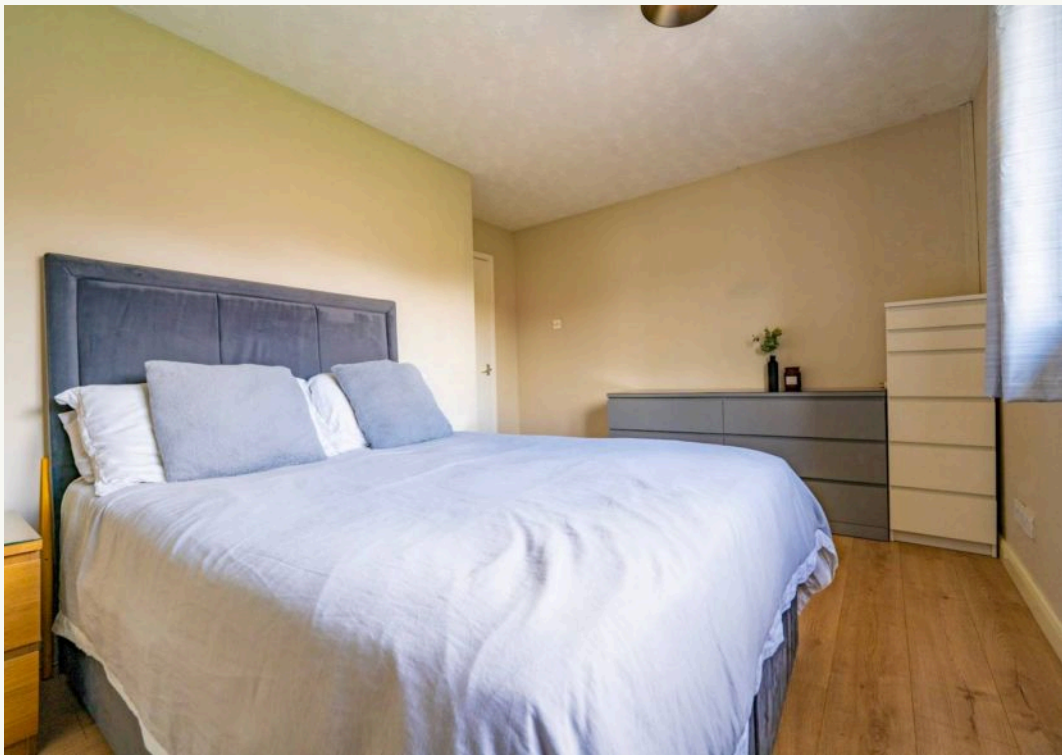
9 Windsor Court

West Hallam, Ilkeston

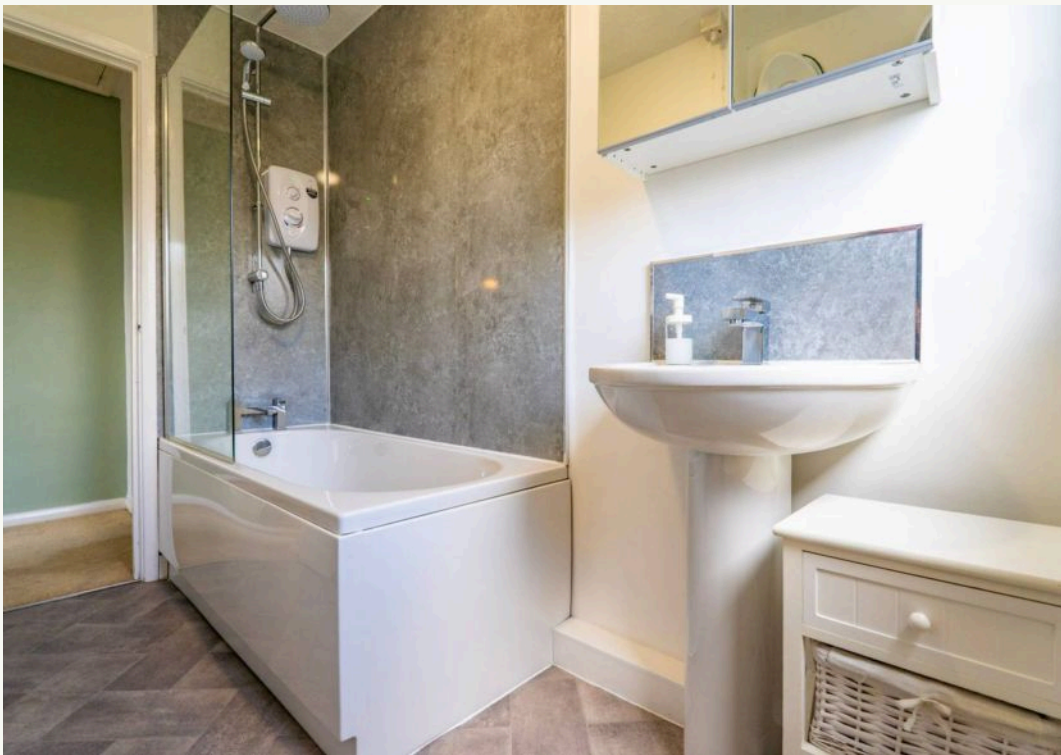
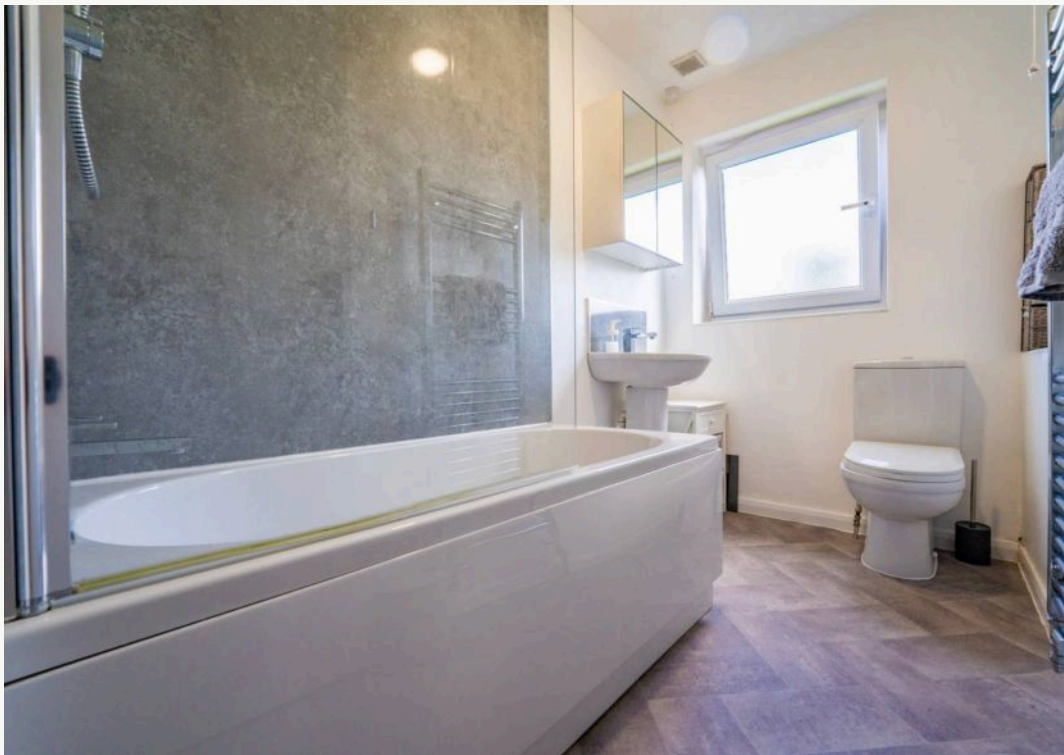
A rare opportunity presents itself with this charming two Bedroom Semi Detached Home, nestled on a generous corner plot in the most desirable location at the heart of West Hallam village. Tucked away in a private cul de sac, this property boasts ample parking for multiple cars leading to a double garage. The interior features a cosy lounge, a breakfast kitchen, two double bedrooms, and a recently refitted white three-piece bathroom suite. Step outside to discover the true beauty of this home - a private and well-maintained garden to the rear, perfect for enjoying the outdoors. With convenience in mind, this residence is within walking distance to shops, doctors, bus links, and schools, catering to all aspects of daily life. Embrace the tranquillity of the area with wonderful countryside walks right on your doorstep.

The outside space of this property is equally impressive, offering a pebbled driveway to the front for multiple cars leading to a spacious double garage with an up-and-over door, along with power and lighting for convenience. A side path provides access to the rear, revealing a private garden with a paved patio area perfect for al fresco dining. This leads to a lush area laid to lawn adorned with plants and shrubbery borders, enhancing the outdoor ambience. Additional features include a hardstanding area ideal for a garden shed, and new fencing that surrounds the property's boundary, ensuring privacy and security. Furthermore, the double garage, measuring 5.63 x 3.91 (18'5" x 12'9"), completes this outdoor oasis with its functionality and ample space, perfectly complementing the corner plot location with parking for multiple



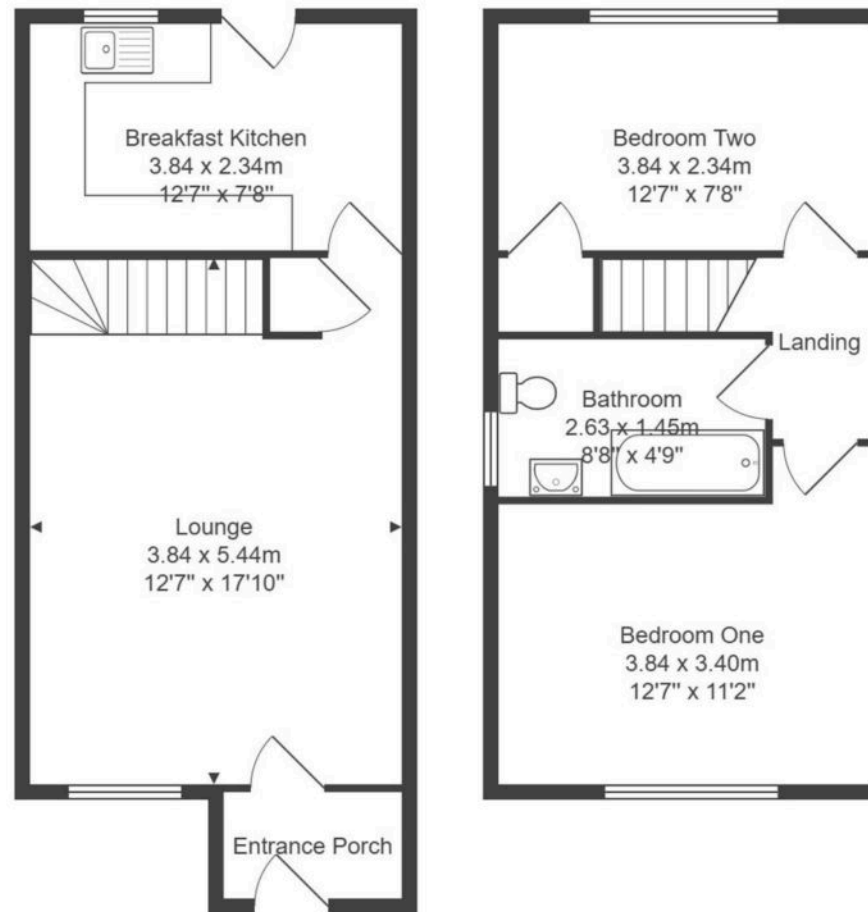












All measurements are approximate and for display purposes only.



Nicole Beales - Hortons

Unit 11, Brook Park Gaddesby Lane - LE7 4ZB

07561 100839 · nicole@hortons.co · hortons.co/partners/nicole-beales/