



70 St. Wilfrids Road, West Hallam

Guide Price £330,000 - £340,000



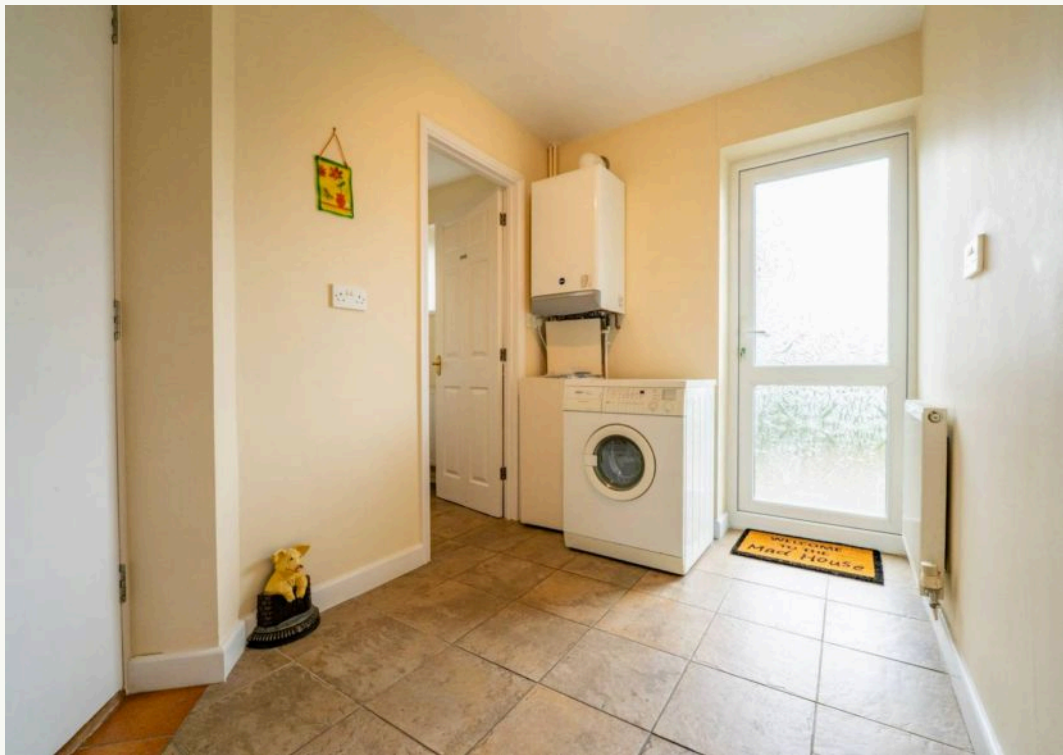
70 St. Wilfrids Road

West Hallam, Ilkeston

Nestled in the heart of the picturesque village of West Hallam, this enchanting three-bedroom detached home offers a tranquil retreat with breathtaking countryside views. A charming abode boasting spacious interiors, this desirable property presents a delightful opportunity to create a bespoke living space. The well-established, landscaped gardens to the front and rear enhance the allure of this residence, providing a serene setting for outdoor relaxation. Benefitting from a hardstanding driveway for three to four vehicles and a single garage, convenience and practicality meld seamlessly in this inviting home. With double glazing, gas central heating, and the added advantage of no upward chain, this property epitomises comfort and ease. Situated just moments away from scenic countryside walks, Shipley Park, and the renowned 'Nutbrook Trail,' this residence offers a perfect blend of rural tranquillity and modern amenities. Furthermore, the property enjoys close proximity to local shops, schools, and efficient bus links, promising a lifestyle of convenience and comfort.

Step outside and bask in the splendour of the expansive outdoor space this property offers. The sizeable hardstanding driveway to the front ensures parking for multiple vehicles, complemented by a stunning landscape garden featuring lush greenery and mature plants. Access to the rear garden is made easy via the side, where a raised patio area awaits, providing an ideal spot to savour the panoramic countryside views. Descending two steps leads to a beautifully landscaped rear garden, predominantly laid to lawn and framed by a well-



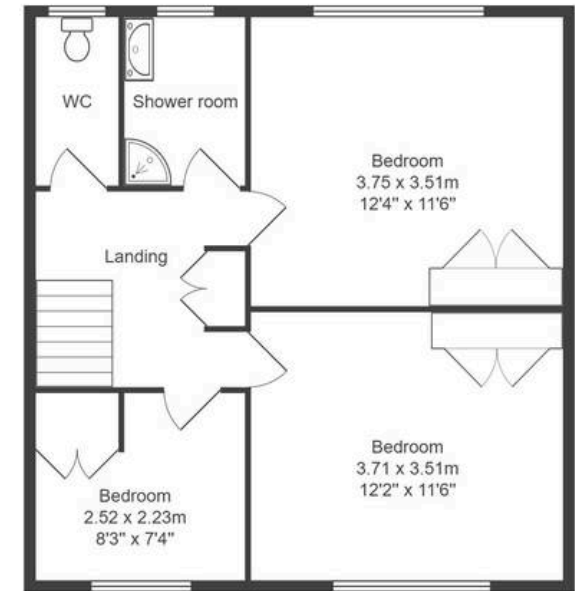
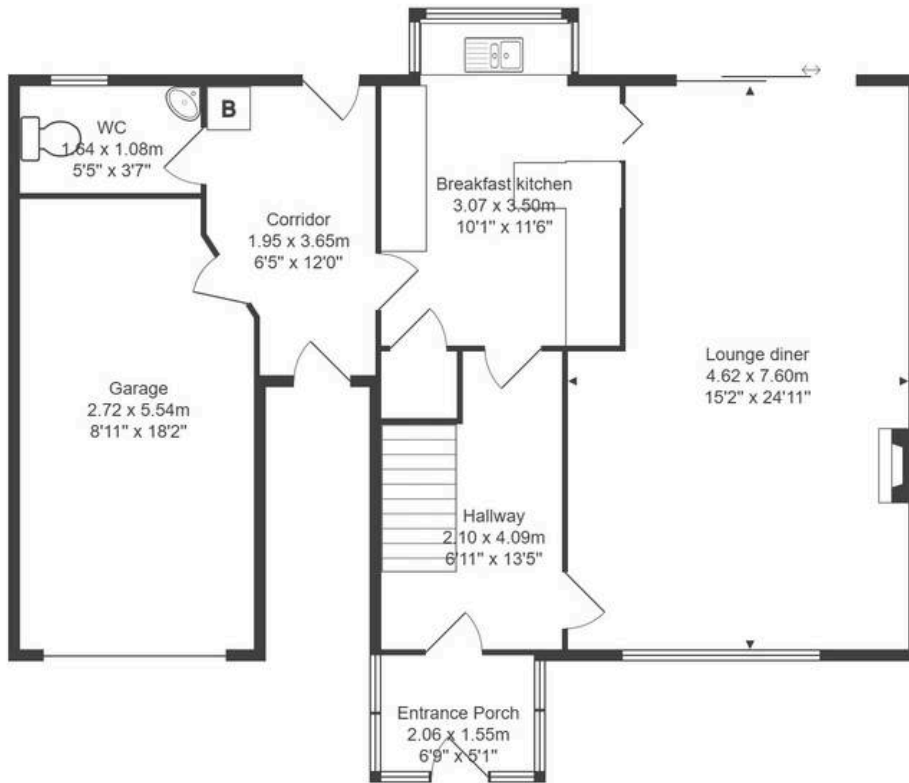












All measurements are approximate and for display purposes only.



Nicole Beales - Hortons

Unit 11, Brook Park Gaddesby Lane - LE7 4ZB

07561 100839 · nicole@hortons.co · hortons.co/partners/nicole-beales/