



Godsmarks, 184 Derby Road

Offers in Region of **£825,000**

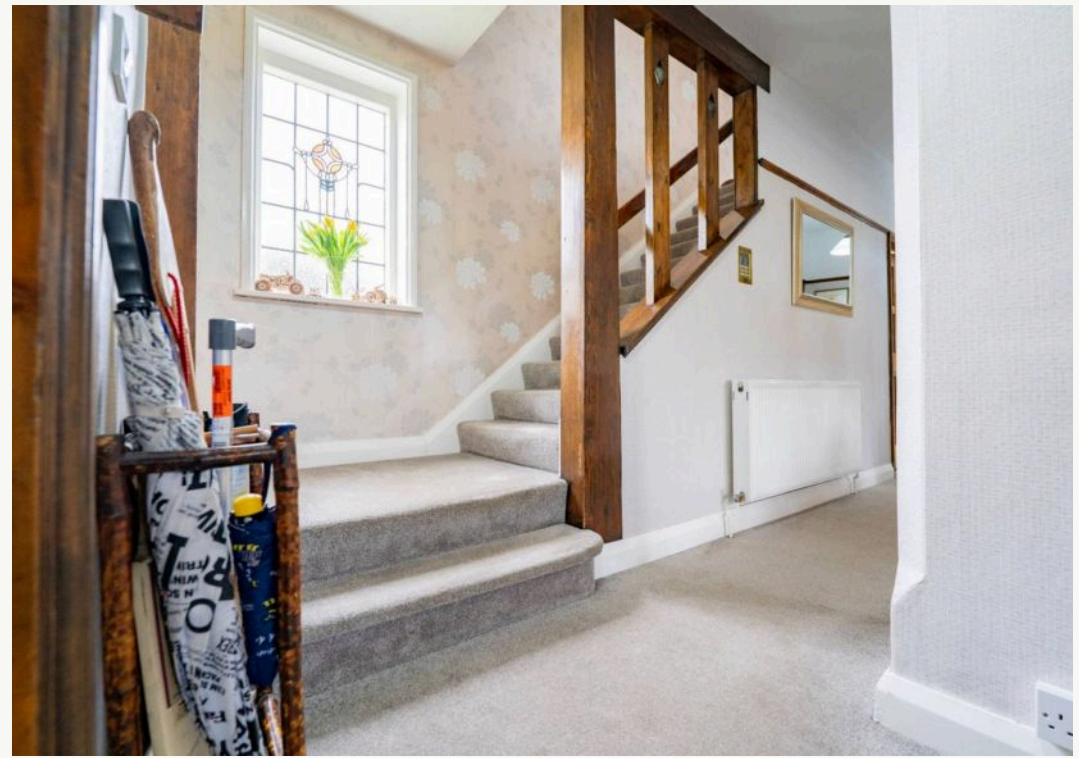
Godsmarks

184 Derby Road, Ilkeston

Hortons are delighted to bring to the market this superb family home. Nestled in the prestigious and highly sought-after location just off of Manor Fields Road, this stunning four bedroom detached home presents a rare opportunity to own a period property steeped in history. Keeping true to its origins dating back to circa 1929, this executive home boasts an array of original features that add to its timeless charm. Spread over a generous plot, the property offers spacious accommodation with three reception rooms, dining kitchen, utility, cloaks, family bathroom and ensuite plus four double bedrooms ideal for both family living and entertaining. The well-established and mature gardens enveloping the house provide a serene outdoor retreat, complete with a large private driveway, garage. A separate fully functional home office/annexe caters to the needs of modern living, making this property a true gem in a prime location, within walking distance to 'good' rated schools and excellent transport links to Nottingham and Derby.

Outside, the enchanting gardens of this property are a sight to behold, offering a haven of tranquillity and privacy. The rear garden features a well-landscaped lawn and a patio area, perfect for alfresco dining and relaxation amongst the mature trees and plant borders. A hardstanding area is designated for a wooden shed, adding practicality to the picturesque setting. Its manicured lawn and an array of plants, shrubs, and trees, all enclosed within secure fencing for complete seclusion. A gated entry leads to a spacious driveway with ample parking space for multiple cars and even a motorhome, with a block-paved pathway directing you to the garage. An



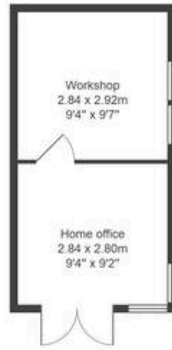












All measurements are approximate and for display purposes only.



Nicole Beales - Hortons

Derbyshire personal partner agent

07561 100839 · nicole@hortons.co · hortons.co/partners/nicole-beales/