



57 Blanch Croft, Melbourne

Guide Price £265,000

57 Blanch Croft

Melbourne, Derby

Stunning three storey grade 2 listed cottage was originally built in 1795 as a former Weavers cottage. This cottage has been restored to retain its cottage features and tastefully modernised throughout, boasting a delightful plot and position right at the top of Blanchcroft, with historical stone wall and generous landscaped garden and recently installed cottage shed. The cottage enjoys a central village location and is within walking distance of all Melbournes vibrant village life, the boutique shops, restaurants and beautiful walks.

The cottage has been well designed to enjoy modern living in a charming environment, with high specification and fully fitted kitchen and bathroom. Gas central heating throughout with newly installed log burner. Majority of the cottage windows have been recently replaced with in keeping timber georgian style cottage windows.

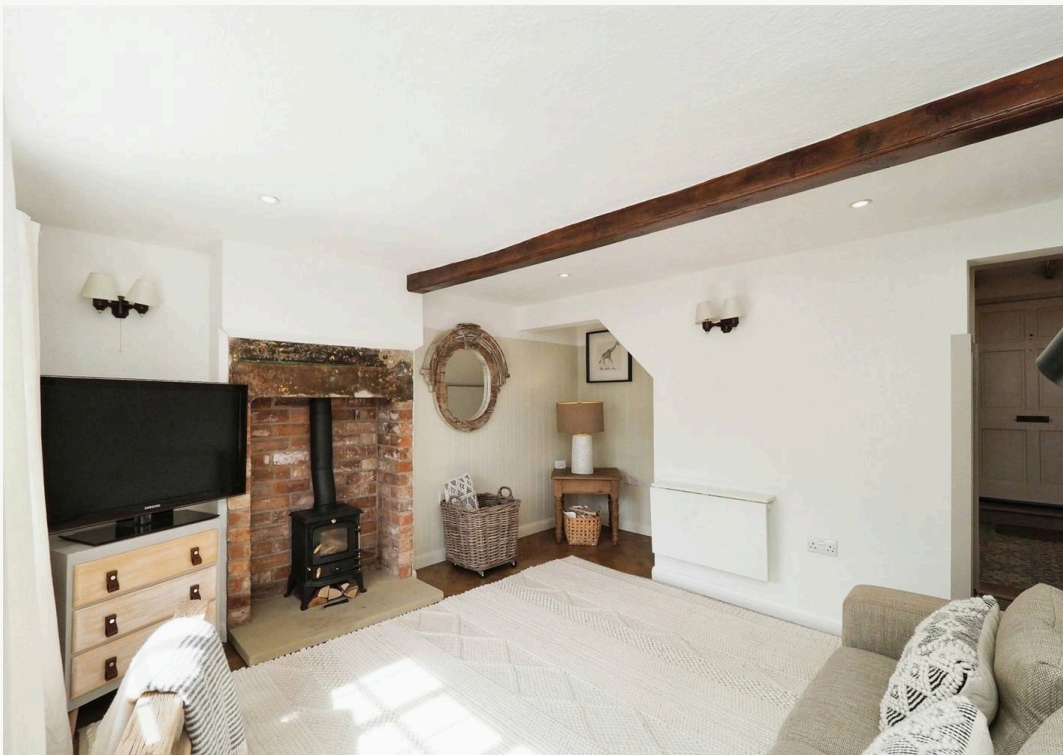


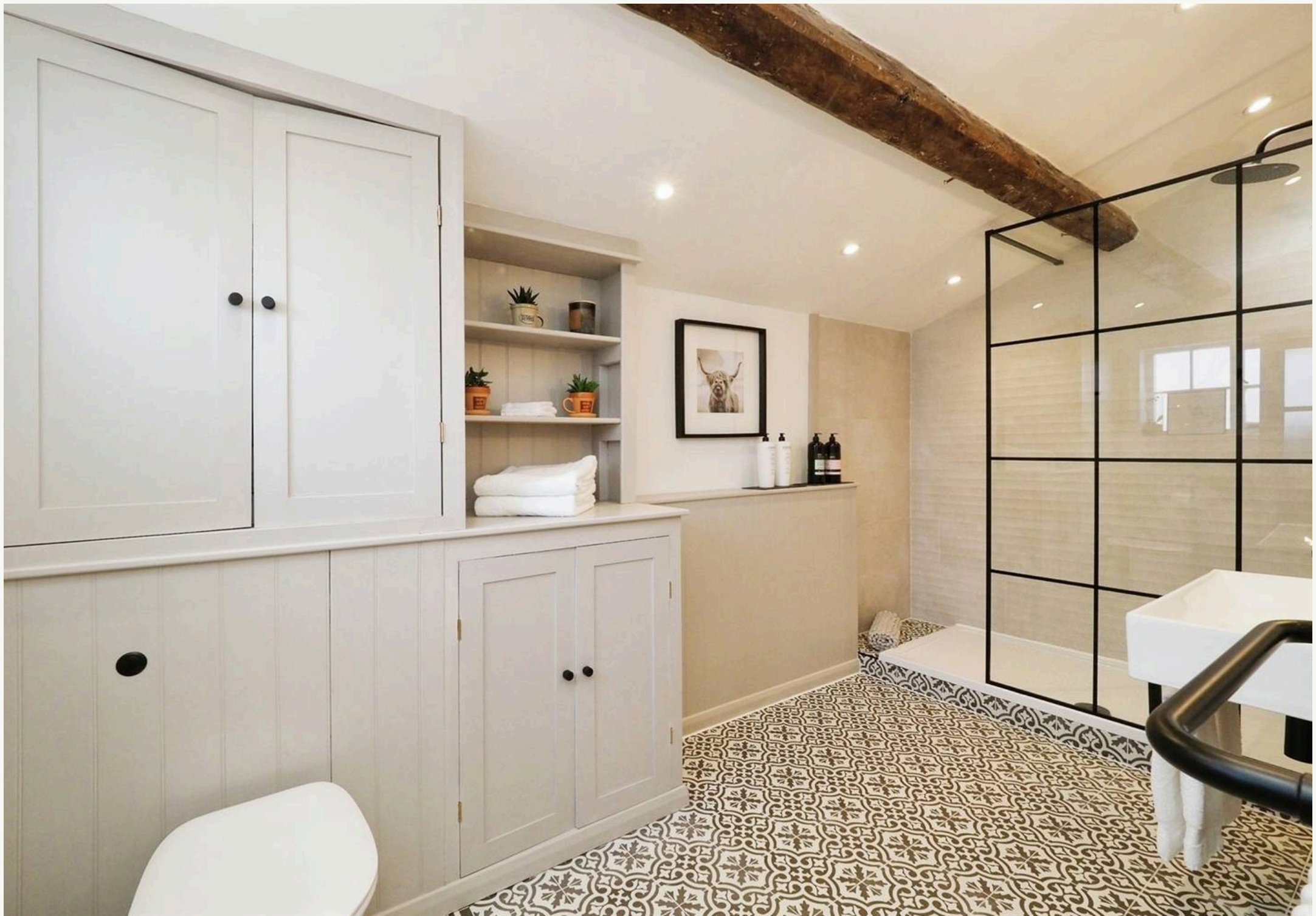
57 Blanch Croft

Melbourne, Derby

- Grade II Listed Edwardian Cottage
- Modern cottage retaining character features
- Log Burner (useable)
- Gas central heating
- New windows to the rear elevation
- Planning consent for further changes (external doors)
- Substantial Garden with Pergola & timber shed
- handsome original 8ft stone wall to the garden
- High Spec fully fitted Kitchen with integral appliances
- Elegant high spec Bathroom
- NO UPWARD CHAIN











STREET
57 Blanchcroft

LOCATION
Melbourne, DE73 8GG

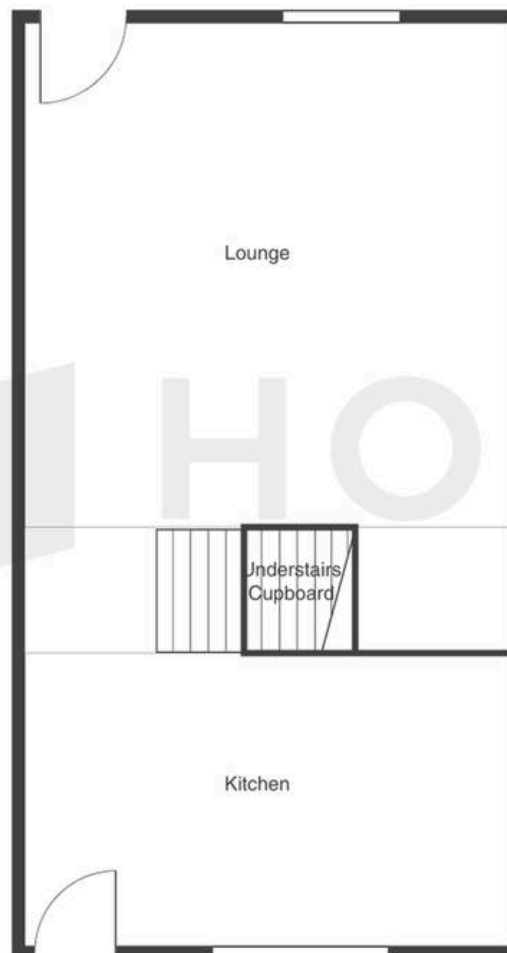


LISTING AGENT
Charlotte Poulton

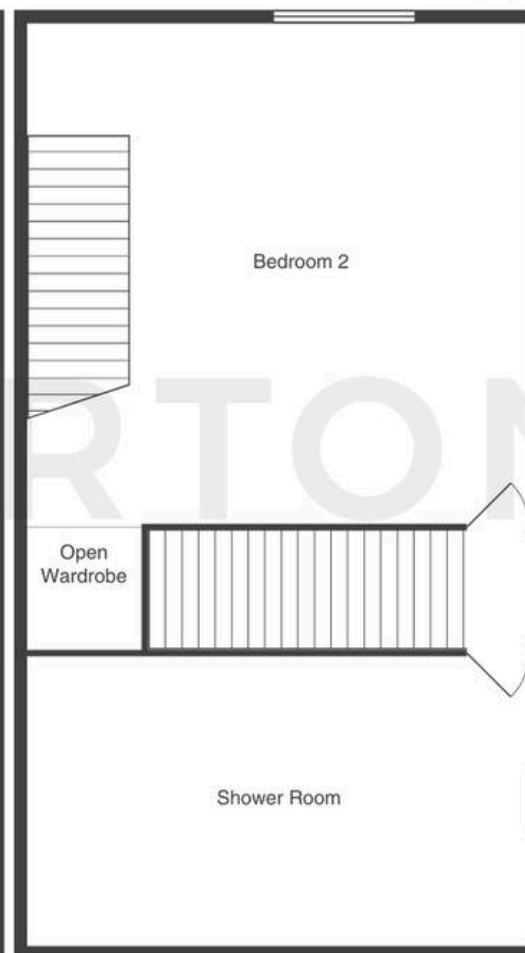
07599. 214969
charlotte@hortons.co

This floor plan is intended as a guide to layout. Any measurements quoted are approximate. Not to scale.

Ground floor



First floor





STREET
57 Blanchcroft

LOCATION
Melbourne, DE73 8GG



LISTING AGENT
Charlotte Poulton

07599. 214969
charlotte@hortons.co

This floor plan is intended as a guide to layout. Any measurements quoted are approximate. Not to scale.

Second floor

