



3 Fishpools, Leicester
£220,000

3 Fishpools

Leicester, Leicester

NO CHAIN - Fishpools, Leicester - Beautifully Finished Three-Bedroom Semi-Detached Home.

Welcome to this immaculately presented three-bedroom semi-detached property, located in a sought-after area with excellent access to local amenities and transport links. Ideal for first-time buyers, this stunning home combines stylish design with comfortable family living.

Upon arrival, a private driveway leads to a single garage, providing convenient off-road parking. A side gate offers access to the rear garden, while the welcoming front door invites you into the home.

Inside, the bright and airy entrance hall sets the tone, leading into a spacious lounge bathed in natural light from a charming bay window. This room is the perfect retreat for relaxing with family.

The well-appointed kitchen is both functional and inviting, showcasing beautifully maintained units and a dedicated dining area. It also benefits from under-stairs storage and direct access to the rear garden.

Upstairs, the thoughtfully designed landing connects to three bedrooms and a modern family bathroom. The large master bedroom impresses with its tasteful decor and ample space, while the second bedroom offers versatility for guests or family members. The third bedroom features a striking sliding oak door, adding a unique and attractive touch to the room.

Outside, the rear garden is a space perfect for the kids, or sun bathing (when we get some!).

Situated just a short distance from Fosse Shopping















STREET
Fishpools

LOCATION
Braunstone, LE3 2UL

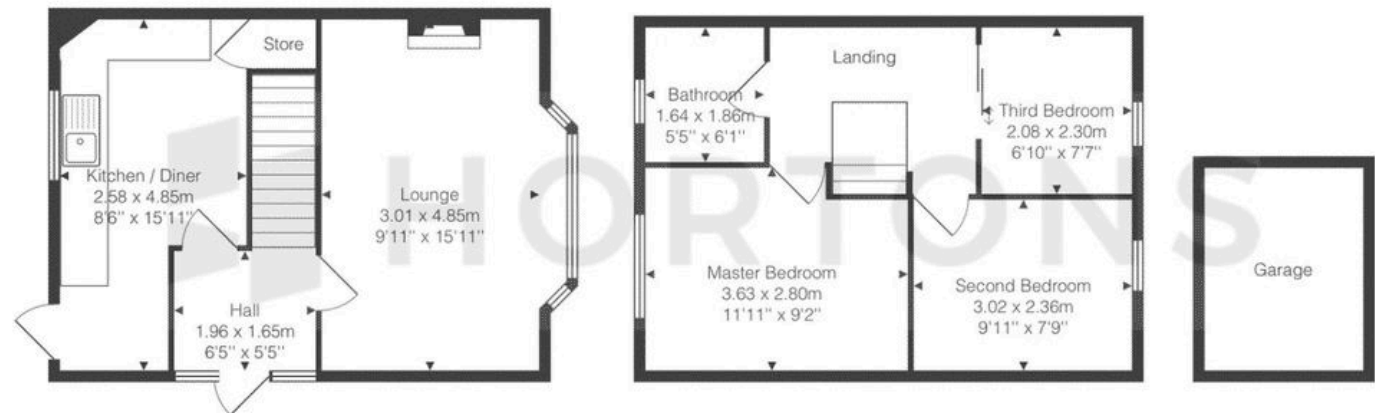


LISTING AGENT
Eliot Putman

07972763498
eliot@hortons.co

This floor plan is intended as a guide to layout. Any measurements quoted are approximate. Not to scale.

3, Fishpools, Braunstone Town, LE3 2UL



Total Area: 71.1 m² ... 765 ft²

All measurements are approximate and for display purposes only.



Eliot Putman - Hortons

Unit 11, Brook Park Gaddesby Lane - LE7 4ZB

07972 763 498 • eliot@hortons.co • hortons.co/partners/eliot-putman/