



6 Marlow Crescent, West Hallam

Fixed Price £260,000

 HORTONS

6 Marlow Crescent

West Hallam, Ilkeston

This superb extended fully reconfigured and modernised detached family home is ready to move into. Situated on a quiet cul de sac in the beautiful village location of West Hallam. A testament to modern luxury and thoughtful design, a must see!

Introducing Marlow Crescent. Nestled in a quiet cul-de-sac in the beautiful village location of West Hallam, this stunning extended three-bedroom detached family home stands as a testament to modern luxury and thoughtful design. Renovated and reconfigured with meticulous attention to detail, every aspect of this home exudes a sense of spaciousness and modernity.

Step inside, and you're welcomed into a spacious entrance hallway leading to spacious rooms, bathed in natural light streaming through large windows. The layout creates a sense of airiness and flow, perfect for both daily living and the fulcrum of family life.

The heart of the home is undoubtedly the sleek and stylish open plan kitchen diner. Whether you're whipping up a quick meal or hosting a dinner party, this culinary haven offers both functionality and beauty.

This home in brief comprises; Entrance Hallways, Cloaks/WC, Utility room, Open plan kitchen Diner, Lounge, Stairs ascending to first floor, Three good size bedrooms and a four piece bathroom suite.

Outside, the property a cleverly designed garden with a tiered level enjoying a morning coffee or watching the children play, the outdoor space is the perfect extension of the home's living areas.

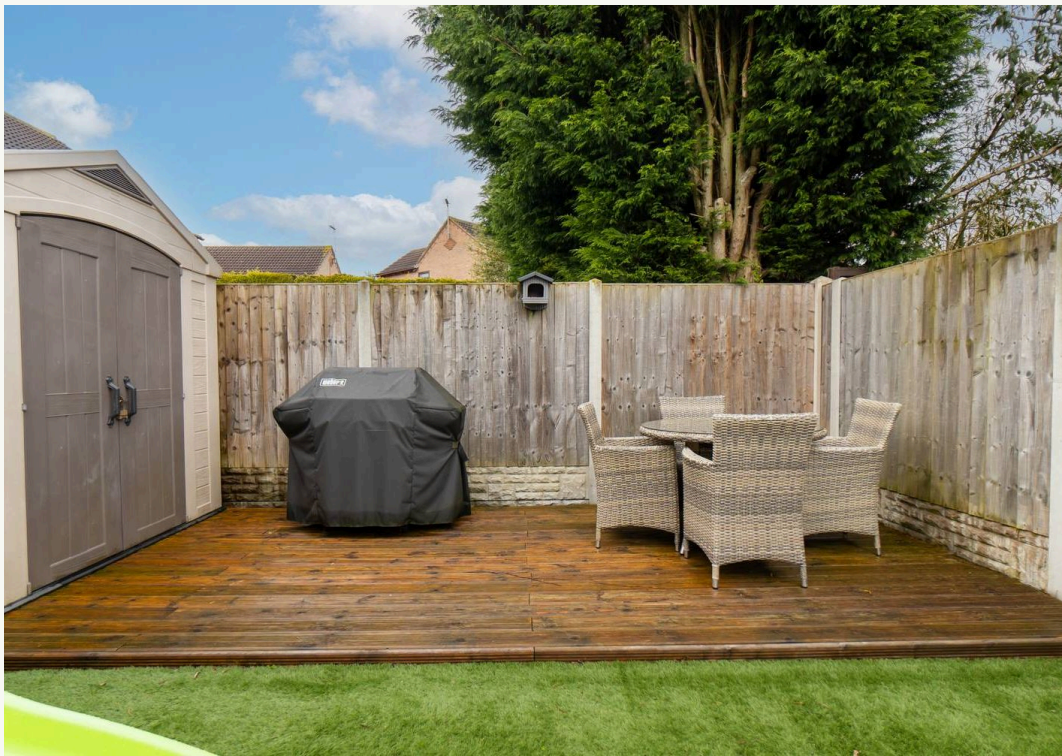


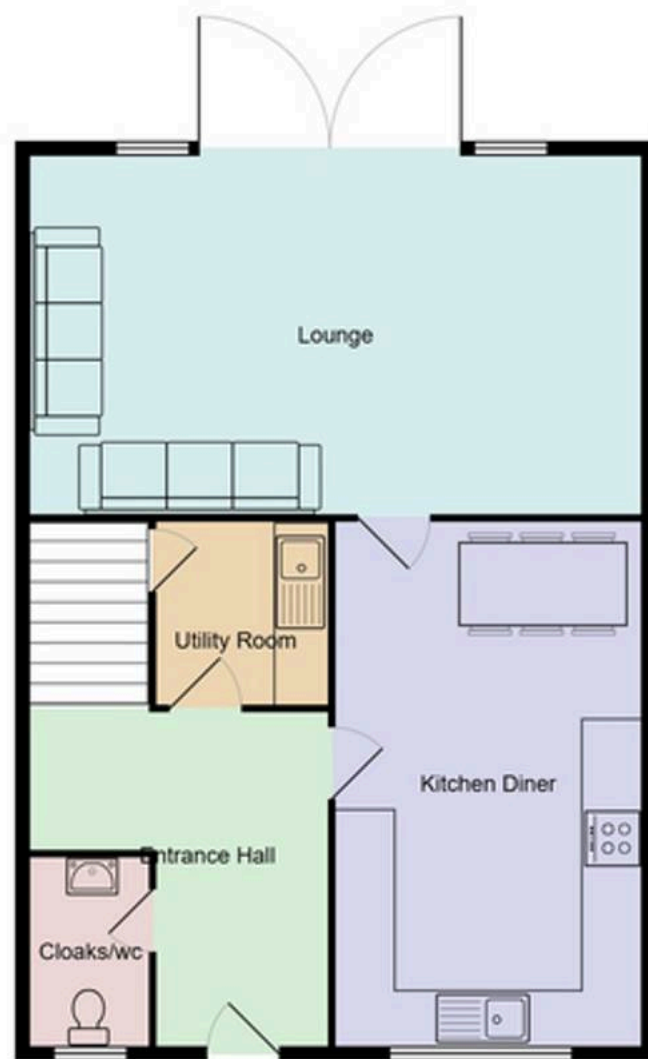












All measurements are approximate and for display purposes only.



Nicole Beales - Hortons

Your Derbyshire personal agent

07561 100839 · nicole@hortons.co · hortons.co/partners/nicole-beales/